

La Calidad de la Información Geoespacial Digital, sus Limitaciones, y su Impacto en las Personas y la Vida Diaria

Gabriel Asato

Servicio Geológico Minero Argentino
Jornada sobre Calidad de la Información Geoespacial - UNLP
19 septiembre de 2016



IDERA

Infraestructura de Datos Espaciales
de la República Argentina

Aspectos de la Calidad de Datos Digitales

- **Exactitud Temática**
 - **Parámetro relacionado a la descripción del objeto geográfico.**
- **Consistencia de la Información**
 - **Conservación de las Relaciones Espaciales**
 - **Coherencia topológica**
- **Completitud**
 - **Todo lo que tiene que estar digitalizado, está digitalizado?**
- **Escala, Objetivos de la Información, Precisión y Exactitud.**
- **Documentación, Metadatos**

Cuál es el Impacto de la Calidad de los Datos en una IDE?

La calidad de datos en una IDE nos tienen que permitir:

- Poder utilizar la información para propósitos generales.
- Contar con información fidedigna y calificada.
- Realizar consultas de la base de datos en forma consistente.
- Poder integrar información de distintas fuentes sin que existan inconsistencias o conflictos graves en la información.
- Permitir realizar análisis geoespaciales dentro de los límites fijados por los metadatos.

En definitiva, hacer un uso seguro de la información

Ahora,

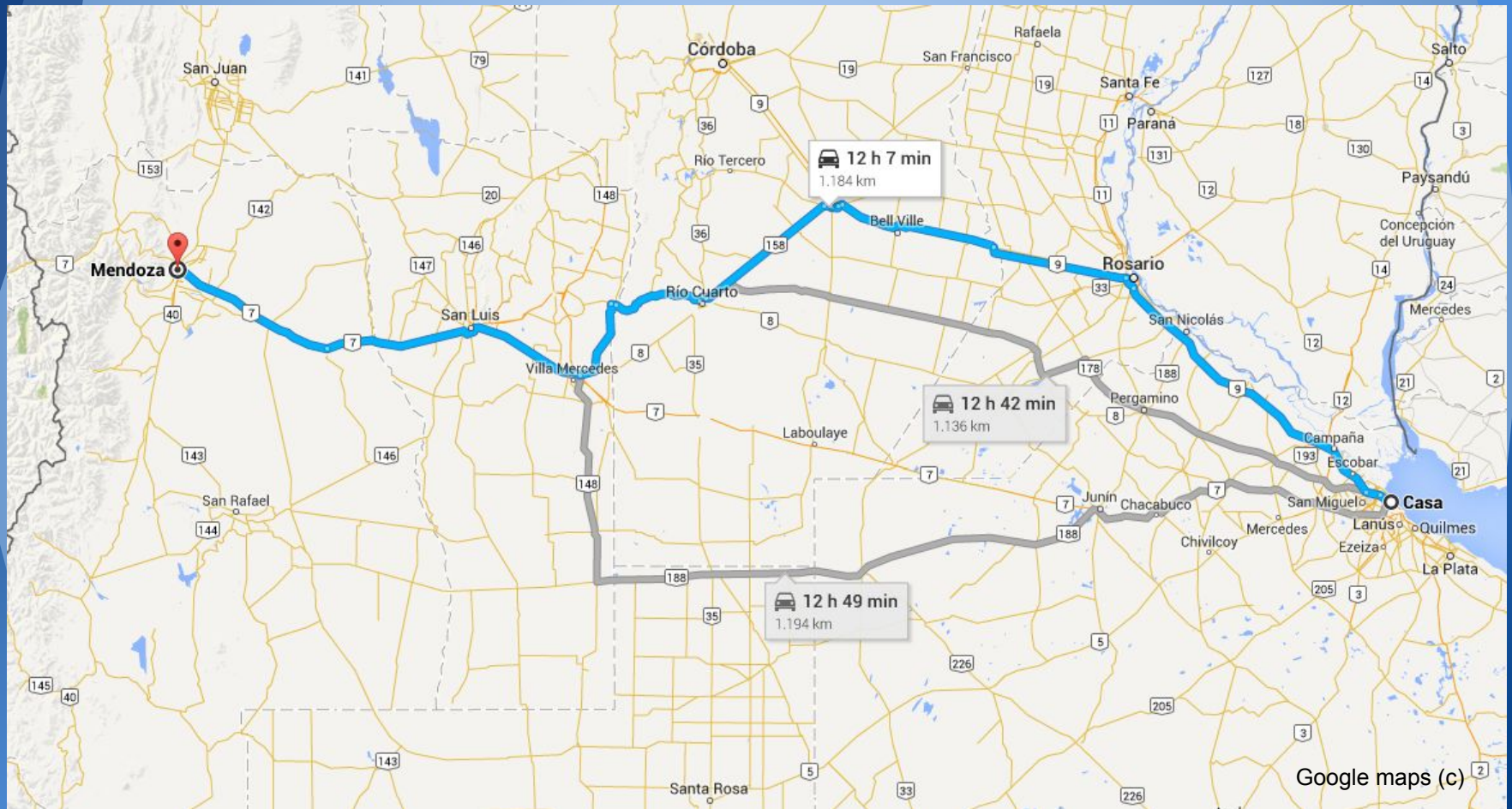
¿Somos conscientes del impacto de la calidad de los datos digitales sobre el uso que hace la sociedad?

¿Cuáles son nuestras responsabilidades como productores de información?

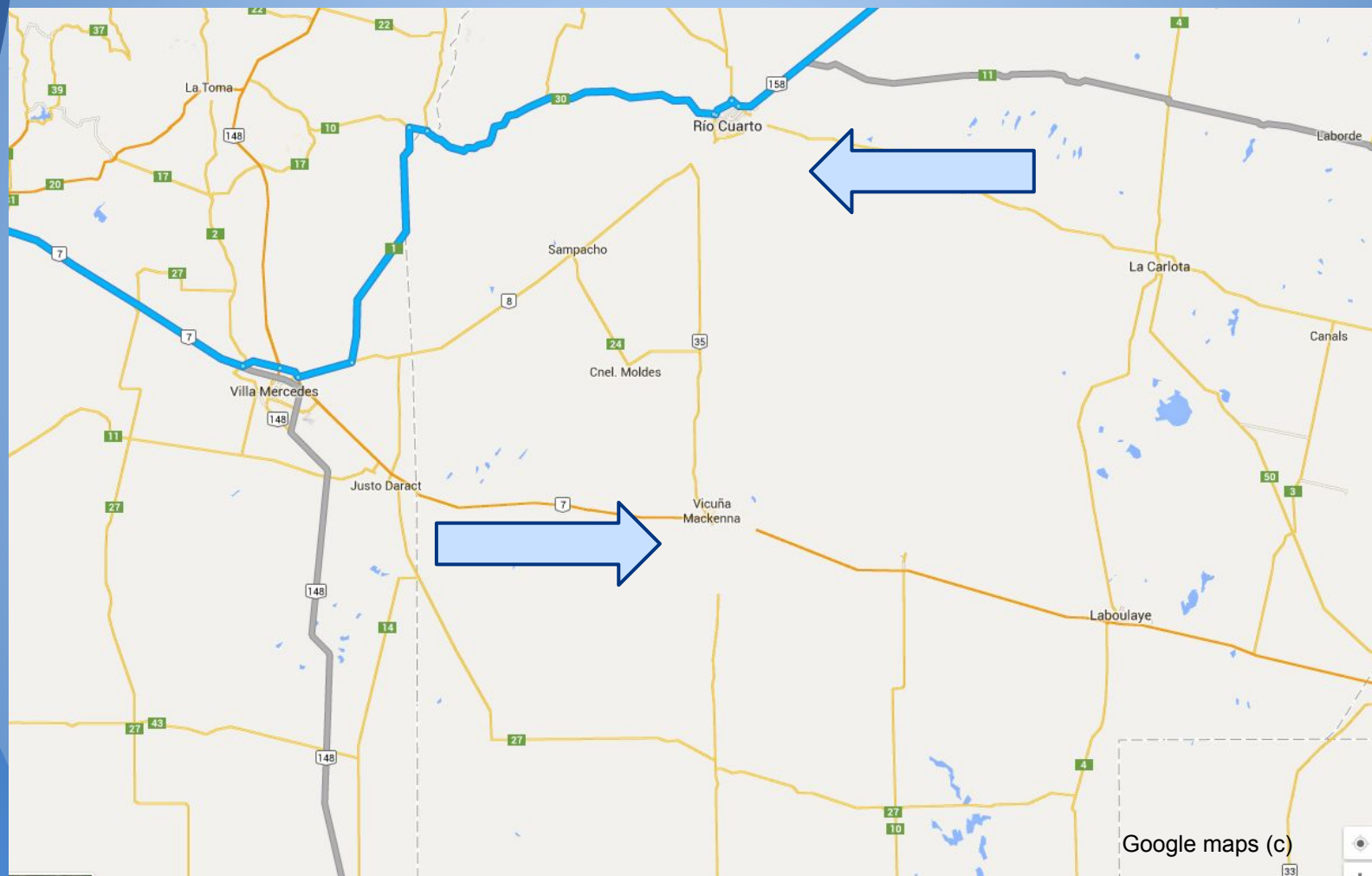
Repasemos algunos casos de problemas generados por la información cartográfica digital



Qué Paso????



Qué Faltó?



Le hizo caso al GPS. Ignoró las señales de tránsito

Gabriel Asato, 2016

engadget[™] REVIEWS ▾ FEATURES ▾ GUIDES ▾ VIDEOS ▾ GALLERIES ▾ FORUMS ▾ EVENTS ▾

UPCOMING: Engadget Expand starts Friday: Prepare yourselves, people!

Faith in GPS sends Mercedes downstream

by Donald Melanson | @donmelanson | March 27th 2007 at 10:14 am

[Twitter](#) [Facebook](#) [Google+](#) [LinkedIn](#)



© Tony Swift

So far, over-dependence on GPS devices has resulted in more inconvenience than actual danger, but things took a turn for the worse earlier this month when a U.K. woman sent her £96k Mercedes SL500 flying into a river, trusting the car's optimistic GPS guidance instead of the road signs warning of impending doom. Matters were made worse as the river was swollen from recent heavy rains, which caused the vehicle to be swept some 200 meters downstream before the woman was able to escape. While she emerged unscathed, the car unfortunately wasn't quite so lucky, remaining stuck in the river for a week after the incident and now believed to be a complete write-off.

Via The Register

FEATURE

Five qu...
contact

14 hours a

La Interpretación de los Datos y las Limitaciones Propias de la Información

6 Bus Driver Follows GPS, Gets Wedged Under



This one is kind of scary. Do not, and you have kids who follow you yourself, or if you live someplace maybe skip it (and be careful) you are in the mood for a

In April of 2008, a bus driver team ignored the basic law of common sense when he pl Washington Park Arboretum.

because why else would they have a selecti



In October of 2006, an elderly German decision to ignore a "closed for construction Hamburg. Why? Why on earth? The 80- to follow his GPS directions to the letter.

The man and his wife were lucky to escape shot past an enormous warning sign and sand pile.

And before you ask: yes, he was also dr

German Driver Obeys GPS, Drives Into Sand Pile

UK Motorists Follow GPS, Get Stuck on Narrow Roads



In the tiny villages and towns around Winchester, UK, motorists had problems with GPS navigation. They follow the route that suggest and repeatedly wind up stuck -- the roads are simply for some wider vehicles.

The problem got so bad in the town of Exton that a brightly erected to warn drivers NOT to follow their GPS and to, instead, use common sense. These are the times we live in, folks.

Falta Cerebro y Hay Excesiva Confianza en la Tecnología

The Role of Trust and Interaction in GPS Related Accidents: A Human Factors Safety Assessment of the Global Positioning System (GPS)

Chris. W. Johnson, DPhil; Department of Computing Science, University of Glasgow, Scotland, UK.

Christine Shea, PhD; ESR Technology Ltd, Birchwood Park, Warrington, Cheshire, UK.

C. Michael Holloway, NASA Langley Research Center, Hampton, VA, USA

Keywords: GPS; human error; accident analysis; organisational safety.

Abstract

The Global Positioning System (GPS) uses a network of orbiting and geostationary satellites to calculate the position of a receiver over time. This technology has revolutionised a wide range of safety-critical industries and leisure applications ranging from commercial fisheries through to mountain running. These systems provide diverse benefits; supplementing the users existing navigation skills and reducing the uncertainty that often characterises many route planning tasks. GPS applications can also help to reduce workload by automating tasks that would otherwise require finite cognitive and perceptual resources. However, the operation of these systems has been identified as a contributory factor in a range of recent accidents. Users often come to rely on GPS applications and, therefore, fail to notice when they develop faults or when errors occur in the other systems that use the data from these systems. Further accidents can stem from the 'over confidence' that arises when users assume automated warnings will be issued when they stray from an intended route. Unless greater attention is paid to the human factors of GPS applications then there is a danger that we will see an increasing number of these failures as positioning technologies are integrated into increasing numbers of applications.

La Calidad de los Datos Digitales Tiene Derivaciones de Responsabilidad Institucional

Estas mujeres pudieron haber muerto por errores en la información digital

Gabriel Asato, 2016

The screenshot shows a Daily Mail news article titled "Three women recount how they were lost in Death Valley for THREE DAYS after GPS error". The article is dated Friday, Nov 7th 2014. The main text describes how Donna Cooper, her daughter Gina, and a friend Jenny Leung got lost in California's Death Valley National Park in 2010 because their GPS was faulty. Two photographs show Donna Cooper and her daughter Gina. A sidebar on the right contains a "DON'T MISS" section with several article teasers, including one about Cheryl Fernandez-Versini and another about Katie Price.

Friday, Nov 7th 2014 6PM 11°C 6PM 8°C 5-Day Forecast

MailOnline News

Home News U.S. | Sport | TV&Showbiz | Australia | Femail | Health | Science | Money | Video | Travel | Fashion Finder

News Home | Arts | Headlines | Pictures | Most read | News Board | Wires Login

PICTURED: Victim of Hannibal Lecter Army hero who was savagely Britain to pay just HALF of the EU's Police officer accidentally Schoolgirl, 7, suffers facial injury BREAKING NEWS: Four Islamic terror Why my

Three women recount how they were lost in Death Valley for THREE DAYS after GPS error

By SNEJANA FARBEROV
PUBLISHED: 05:43 GMT, 15 March 2013 | UPDATED: 05:48 GMT, 15 March 2013

What started out as a day trip to a local museum ended up nearly costing three women their lives when they say their GPS had led them astray and left them stranded in California's Death Valley for three days.

Donna Cooper, her daughter Gina and a friend, Jenny Leung, told ABC News' 20/20 that on a balmy July day in 2010, they packed their car with enough provisions for the day and headed for Scotty's Castle's, an attraction in Death Valley National Park.

With the help of their seemingly trusty GPS, nicknamed 'Nell' by Donna Cooper, they reached the museum, spent several hours there and then got back into their Hyundai to go home.

© Handout © Handout

Day trippers: Donna Cooper, left, and her daughter Gina, right, nearly died in Death Valley after getting lost thanks to their GPS on their way home from a local museum

Things started to go wrong for the three travelers after they had made the fateful decision to take a detour to visit another attraction called The Racetrack.

Site Web Enter your search Search

Like Daily Mail Follow @dailymailuk Follow Daily Mail +1 Daily Mail

Share

DON'T MISS

- She's full of s***... She shouldn't tell porkie pies: Cheryl Fernandez-Versini hits back at Nadine Coyle's claims that she didn't want Girls Aloud to split
- Bet those shoes were Pricey! Katie steps out in thigh-high snake-skin boots and ripped denim jeans for TV appearance Fashion fail in mismatched ensemble
- Taking the plunge with Dougie Poynter? Ellie Goulding sports a sparkler on her ring finger as she steps out at fashion launch Is Ellie getting married?
- PICTURE EXCLUSIVE: Sean Penn looks exhausted in Cape Town airport with girlfriend Charliz Theron as they prepare to fly home after wrapping The Last Face
- EXCLUSIVE: He's distraught, he wanted to get back together: Nicola McLean enjoys a friendly catch up with her estranged husband Tom Williams at bar
- I could tie my boobs around my waist like a belt! Tina Malone shows off her saggy excess skin after dramatic 11 stone weight loss Plans £50,000 surgery

Responsabilidad Comercial?

OFFERS FANTASY FOOTBALL BINGO DATING COMPETITIONS HOROSCOPES CARTOONS CROSSWORDS COOKIE POLICY

I'M A CELEBRITY All the latest jungle gossip >

Mirror

Download our FREE mobile and tablet apps >

Most read Live feeds Top Videos News Football Celebs TV & Film Weird News

TRENDING CYBER MONDAY WELSH CANNIBAL SHRIEN DEWANI EBOLA CONISBROUGH CRASH OSAMA BIN LADEN Sport Technology Money Travel Motoring

M News UK News Direct Line




SatNav danger revealed: Navigation device blamed for causing 300,000 crashes


Jul 21, 2008 00:00 By Mirror.co.uk

Road safety chiefs last night warned of the dangers of satnavs after figures blaming them for 300,000 smashes and near prangs.

6 Shares

Share Tweet +1 Email

FREE STANDARD SHIPPING SITEWIDE LIMITED TIME ONLY CLICK TO ACTIVATE EXPIRES 11/21/2014		
		
SonicSeam® Pack and Travel Jacket \$149	Access Mid-Arbor Reels \$145	Mirage Reels \$425



Nicaragua invade Costa Rica a Causa de un Error en Google maps

Una Invasión Causada por Usar Mapas NO OFICIALES

The Telegraph

Home Video News **World** Sport Finance Comment Culture Travel Life Women Fas

USA Asia China Europe Middle East Australasia Africa South America Central Asia Exp

HOME » NEWS » WORLD NEWS » CENTRAL AMERICA AND THE CARIBBEAN » NICARAGUA

Google maps error sparks invasion of Costa Rica by Nicaragua

Nicaragua has used an error on Google's internet maps system to justify an invasion of Costa Rica.

423 83 0 0 506 Email



Nicaraguan troops planted a flag on Costa Rica's Calero Island Photo: REUTERS

By Jon Swaine in New York
9:00PM GMT 08 Nov 2010

Print this article

Nicaragua
News » World News » Central America and the Caribbean » Costa Rica »

In Nicaragua



Daniel Ortega, President of Nicaragua

SECTIONS 🔍

The New York Times

In Final Spending Bill, Salty Food and Belching Cows Are Winners

Your Monday Briefing


Brenna With O C.I.A.

The Lede

The New York Times News Blog

The Google Maps War That Wasn't

By ROBERT MACKEY NOVEMBER 19, 2010 8:40 AM 17 Comments



Esteban Felix/Associated Press Nicaraguan Troops Remain in Costa Rica, but Why? Nicaraguan troops are still hunkered down on an island across the country's border with Costa Rica.

Erró el ZOOM en el Mapa Digital

VOLVO OCEAN RACE 2015



Causas del Accidente:

...”deficient use of electronic charts and other navigational data and a failure to identify the potential danger, and deficient cartography in presenting the navigational dangers on small and medium scale (or zoomed out) views on the electronic chart system in use.”

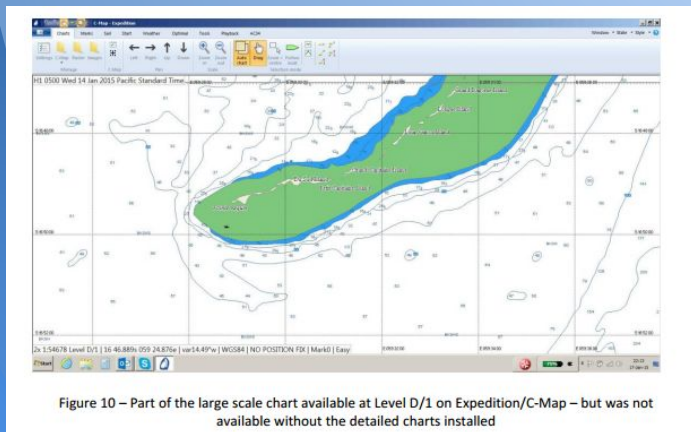


Figure 10 – Part of the large scale chart available at Level D/1 on Expedition/C-Map – but was not available without the detailed charts installed

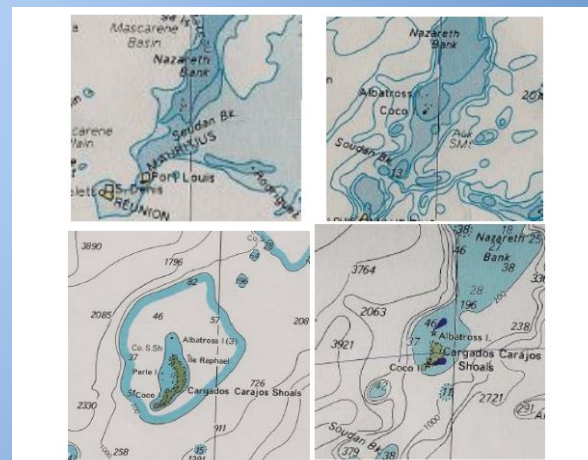
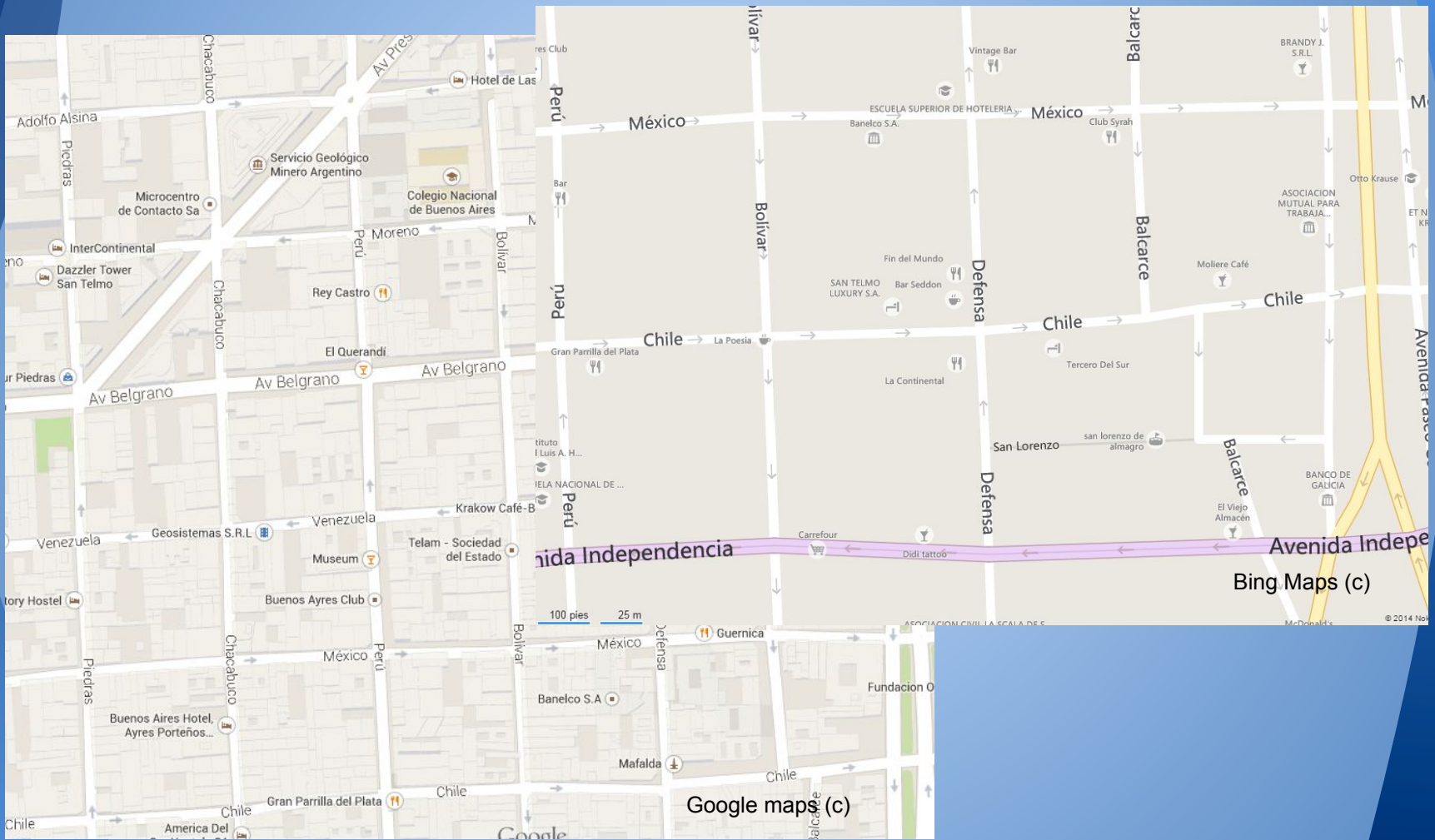


Figure 8 – A collage of official paper chart presentations of the Cargados Carajos Shoals – From top left hand corner clockwise 1:45 Million (UKHO 4000); 1:20M (UKHO 4005); 1:10M (UKHO 4070); 1:3.5M (UKHO 4702)

...”he (navigator) did not zoom in and so gain access to the large scale chart of the dangers”

Que pasa con la Responsabilidad Institucional en la Toma y Uso de Datos con Instrumental no Apropiado



Cuál es el Impacto de la Calidad de los Datos en una IDE?

La calidad de datos en una IDE nos tienen que permitir:

- Poder utilizar la información para propósitos generales.
- Contar con información fidedigna y calificada.
- Realizar consultas de la base de datos en forma consistente.
- Poder integrar información de distintas fuentes sin que existan inconsistencias o conflictos graves en la información.
- Permitir realizar análisis geoespaciales dentro de los límites fijados por los metadatos.

Hacer un uso seguro de la información

Conclusiones

Se debe garantizar el uso seguro de la información

- A través de buenas prácticas de toma de datos.
- A través de modelos de datos que permitan consultas correctas.
- Asegurando la completitud de datos esperada.
- Definiendo las limitaciones de los datos y aplicaciones (disclaimer).
- Proveyendo soporte a los usuarios (por ejemplo a través de programas educativos).
- Recordando a los usuarios que los automatismos no los eximen de aprender a utilizar adecuadamente los datos y aplicaciones.

Gracias!!!



INICIO

RUTAS

LUGARES

COMUNIDAD

Buscar en Ruta 0

Buscar



+1

0

Ingresar

Buscador de Rutas Argentinas

BUSCADOR DE RUTAS

MIS ÚLTIMAS BÚSQUEDAS

Ruta desde Buenos Aires a Mendoza

RESUMEN DEL RECORRIDO

Distancia
1046 km

Duración
11:58 hs

Consumo
105 litros

Peajes
\$ 83,6

COSTO TOTAL
\$ 1548,00

Estimaciones para un
vehículo naftero estandar



Imprimir hoja de ruta | Buscar otra ruta |

Me gusta Compartir

Hoja de Ruta: Buenos Aires - Mendoza