

## Catalogue of the specimens of Trichodactylidae (Crustacea, Brachyura) housed in the Museo de La Plata, Argentina

I.I. César<sup>1</sup> and C. Damborenea<sup>2</sup>

<sup>1</sup>División Zoología Invertebrados, Facultad de Ciencias Naturales y Museo, Universidad Nacional de La Plata.  
Paseo del Bosque S/N°, B1900, La Plata. E-mail: icesar@fcnym.unlp.edu.ar. CIC Researcher.

<sup>2</sup>División Zoología Invertebrados, Facultad de Ciencias Naturales y Museo, Universidad Nacional de La Plata.  
Paseo del Bosque S/N°, B1900, La Plata. E-mail: cdambor@fcnym.unlp.edu.ar. CONICET Researcher.

**RESUMEN.** Catálogo de los ejemplares de Trichodactylidae (Crustacea, Brachyura) depositados en el Museo de La Plata, Argentina. Se presenta un catálogo de la colección de cangrejos dulceacuícolas de la familia Trichodactylidae (Crustacea, Brachyura), depositada en la Colección Carcinológica del Museo de La Plata, Argentina. Se estudiaron ochenta lotes integrados por ocho especies. Entre estos lotes, varios de ellos fueron determinados por R. Ringuelet y C. Magalhães. Se identificaron varios lotes de diferentes regiones de Argentina. Para cada lote se proporciona la siguiente información: localidad de colección georeferenciada, colector y fecha de recolección, número de colección, los datos de la etiqueta (transcriptos con exactitud de la redacción original), observaciones y el mapa de las localidades geográficas.

**Palabras Clave:** Museo de La Plata, Colección, Trichodactylidae.

**ABSTRACT.** We present here a catalog of the Trichodactylidae (Crustacea, Brachyura) deposited in the Crustacean Collection of Museo de La Plata, Argentina. Eighty lots were studied, comprising eight species. Among these lots, many had been characterized by R. Ringuelet and by C. Magalhães; several lots from different regions of Argentina were identified. For each lot the following information is provided: georeferenced locality of collection, collector and collecting date, collection number, labelling data (a precise transcription of the original wording), remarks, and map of the locations.

**Key words:** Museo de La Plata, Collection, Trichodactylidae.

## Introduction

The biological collections of the Museo de La Plata (La Plata, Argentina) are a fundamental resource of information about the biodiversity of Argentina. Since the '90s, the curatorial procedures of the Museum have been improved and the curatorial policies established. The División Zoología Invertebrados houses collections of all invertebrate taxa with the exception of insects, with all the specimens organized into lots.

The Crustacean Collection consists of historical material from the late nineteenth century up to the present. The first recorded collection dates from 1896, corresponds to Tierra del Fuego, Argentina, and consists in crabs collected by Durione. From that date on, the collection grew, thanks to the contributions of several researchers, teachers, students, and members of the Museum or the community. Currently, the collection is computerized and contains more than 1,900 records. César & Damborenea (2010) published the first catalog of the type and nontype material in the Crustacean Collection.

The family Trichodactylidae has a distribution ranging from Mexico to Central and South America (Rodríguez 1992; Cumberlidge *et al.* 2014) and in Argentina mainly inhabits the floodplain of the Paraná River (Magalhães & Türkay 1996a, b; Magalhães 1999a, b; Morrone & Lopretto 2001; Collins *et al.* 2002). Early works on the Trichodactylidae of Argentina were made by Nobili (1896a, b, 1898), Rathbun (1904, 1905, 1906), Ortmann (1902), and Ringuelet (1949). Among the most recent contributions, those that include the taxonomy, distribution, biology, and biogeography of this group of freshwater crabs should also be cited (Bott 1969; Collins 2005; Collins *et al.* 2002, 2006, 2009, 2011; Magalhães & Türkay 1996a, b, c, 2008; Morrone & Lopretto 1996, 2001; Rodríguez 1992; Torres *et al.* 2014; Williner & Collins 2013; Williner *et al.* 2014).

The aim of this contribution is to present the composition and origin of the Trichodactylidae Collection housed in the Museo de La Plata. The material consists of 126 records and was updated to assign the currently accepted taxonomic names.

## Material and Methods

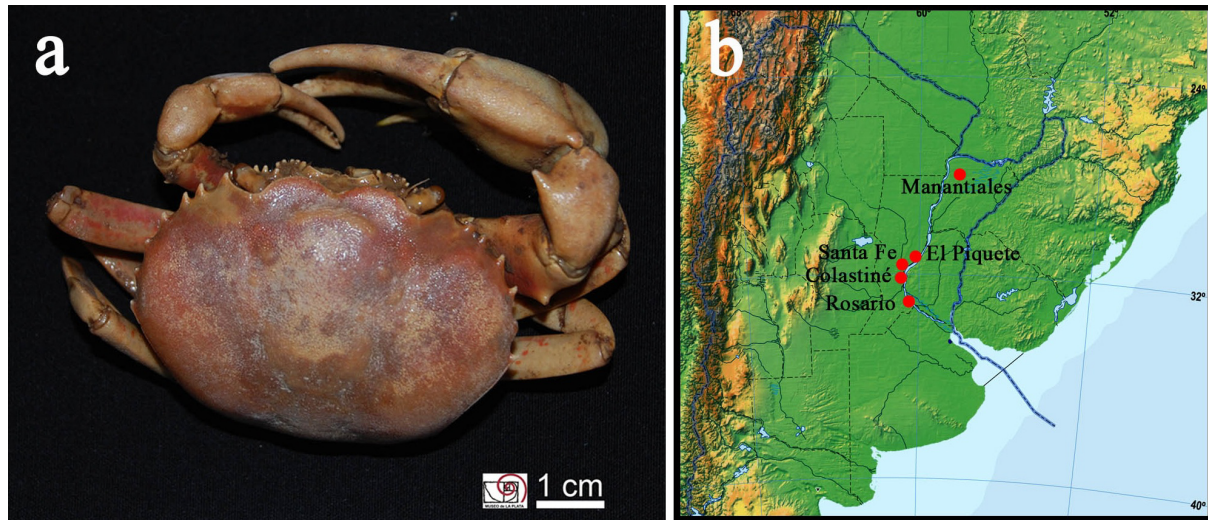
The first step was to separate the trichodactylid material out of the main Crustacean Collection. The labelling data, catalog numbers, and information on the specimens were first recorded, then compared with the database and with the published information when appropriate; and finally photographed. All the specimens were examined and their nomenclature updated. When a specimen could not be identified to species, it was classified to the lowest taxonomic category possible. After georeferencing the localities we present the geographical information here in maps. The material studied is kept in 70% (v/v) aqueous ethanol. The data provided by identifiers on the original labels were respected and the latter kept when available. Each entry lists the following information:

1. The catalogue numbers in the Museo de La Plata (MLP) collection.
2. The locality data is given as found on the specimen labels. Each locality includes country, province, and the name of the local area where the sample was found; with the geographical coordinates and the elevation in meters above sea level (m. a. s. l.) being included.
3. The collector and collecting date are provided when available.
4. Number and sex of the specimens in the lot.
5. The name of the identifiers of the species in the lot.
6. Remarks and references for each lot.

## Identification

*Dilocarcinus* H. Milne Edwards, 1853

*Dilocarcinus pagei* Stimpson, 1861 (Fig. 1)



**Figura 1.** *Dilocarcinus pagei*. a: dorsal view; b: map of the localities according to the records from the crustacean collection of the Museo de La Plata, Argentina.

MLP 12154: Argentina, Corrientes, Manantiales; 27° 56' 60" S–58° 07' 60" W, 60 m. a. s. l.; M. Birabén coll. Number of specimens: 1 male and 1 female. C. Magalhães identified.

MLP 12307: Argentina, Santa Fe, Laguna Guadalupe Pond, and Alto Verde; 31° 40' S–60° 40' W, 8 m. a. s. l.; A. Berst coll., 17-IV-1942. Number of specimens: 1 male. C. Magalhães identified.

MLP 12279: Argentina, Santa Fe, Colastiné; 31° 40' 60" S–60° 37' 60" W, 8 m. a. s. l.; A. Berst coll., IX-1947. Number of specimens: 1 male and 2 females. C. Magalhães identified.

MLP 00048 and MLP 26553: Argentina, Santa Fe, Santa Fe City; 31° 37' S–60° 02' W, 18 m. a. s. l.; A. Berst coll., IX-1947. Number of specimens: 4 males and 4 females. C. Magalhães identified.

MLP 12165: Argentina, Santa Fe, El Piquete; 31° 34' S–60° 43' W, 15 m. a. s. l.; A. Berst coll., 27-IV-1947. Number of specimens: 1 male. R. A. Ringuelet identified.

MLP 12173: Argentina, Santa Fe, Guadalupe Pond; 31° 40' S–60° 40' W, 8 m. a. s. l.; 14-IV-1947. Number of specimens: 1 male. R. A. Ringuelet identified.

MLP 12302: Argentina, Santa Fe, Rosario, Paraná River; 32° 57' 04" S–60° 39' 59" W, 10 m. a. s. l. Number of specimens: 1 male. R.A. Ringuelet identified.

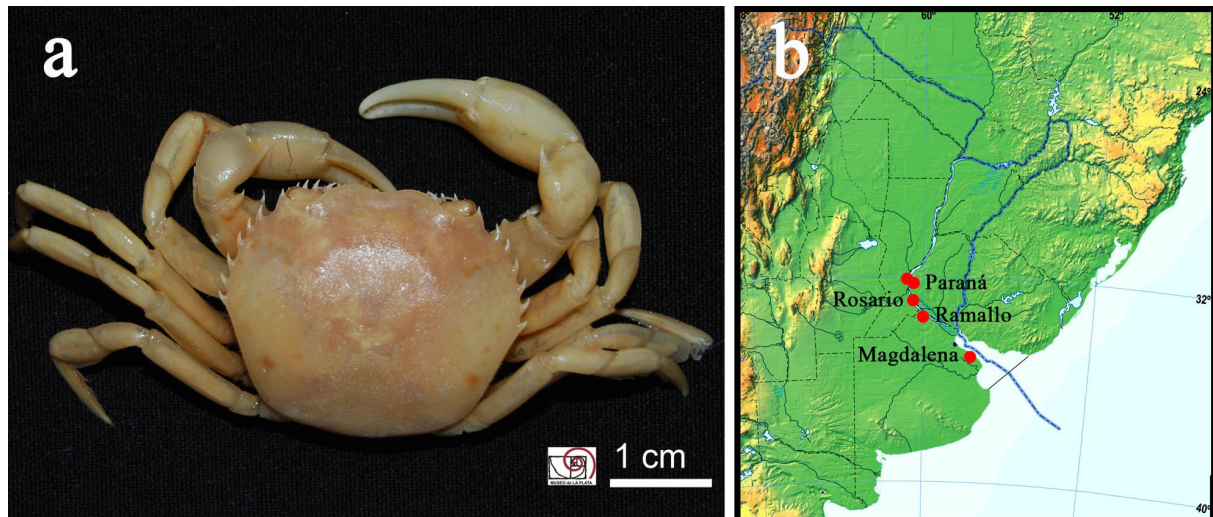
Remarks: This crab inhabits floodplains and is generally associated with the roots of floating macrophytes. In Argentina, the species has been cited before in other localities in the Santa Fe and Formosa provinces (Williner *et al.* 2003). *Dilocarcinus pagei* has a very wide distribution that covers the Paraná and Paraguay Rivers along with the Amazon basin (Magalhães 2003).

*Poppiana* Bott, 1969

*Poppiana argentiniana* (Rathbun, 1906) (Fig. 2)

MLP 12174: Argentina, Santa Fe, Rosario, Paraná River; 32° 57' 04" S–60° 39' 59" W, 10 m. a. s. l. Number of specimens: 2 males and 4 females. Mastrarringo coll., R.A. Ringuelet identified.

MLP 12167: Argentina, Santa Fe, Santa Fe City; 31° 37' S–60° 42' W, 18 m. a. s. l., A. Berst coll. Number of specimens: 1 male. R. A. Ringuelet identified.



**Figura 2.** *Popiana argentiniana*. a: dorsal view; b: map of the localities according to the records from the crustacean collection of the Museo de La Plata, Argentina.

MLP 26279: Argentina, Buenos Aires, Magdalena, Arregui Stream; 35° 04' 00" S–57° 31' 60" W, 6 m. a. s. l.; S. R. Castillo coll., 12-III-1935. Number of specimens: 1 male and 1 female. R. A. Ringuelet identified.

MLP 00274: Argentina, Entre Ríos, El Brete Stream; 32° S–60° 15' W, 76 m. a. s. l.; B. A. Torres coll., 13-VII-1951. Number of specimens: 1 male. R. A. Ringuelet identified.

MLP 26557: Argentina, Santa Fe, Guadalupe Pond; 31° 40' S–60° 40' W, 18 m. a. s. l.; without coll., 14-IV-1947. Number of specimens: 2 males. R.A. Ringuelet identified.

MLP 11190: Argentina, Entre Ríos, Island off Paraná River; 32° S–60° 15' W, 76 m. a. s. l.; R. Gebhard coll., 23-V-1949. Number of specimens: 4 males and 1 female. R.A. Ringuelet identified.

MLP 26288: Argentina, Santa Fe, Santa Fe City; 31° 37' 60" S–60° 42' W, 18 m. a. s. l.; A. Berst coll., IX-1947. Number of specimens: 1 male. R.A. Ringuelet identified.

MLP 11183: Argentina, Buenos Aires, Ramallo; 33° 28' 43" S–60° 01' 15" W, 18 m. a. s. l.; A. Alba coll., 29-IX-1943. Number of specimens: 1 male. R.A. Ringuelet identified.

Remarks: In addition to the citations provided for Argentina, the distribution of this species includes Brazil (the states of Amazonas, Mato Grosso, and Rondonia), Bolivia, and Paraguay and has been found to include the Amazon basin along with the Paraguay and lower Paraná basins (Magalhães 2003).

*Trichodactylus* Latreille, 1828

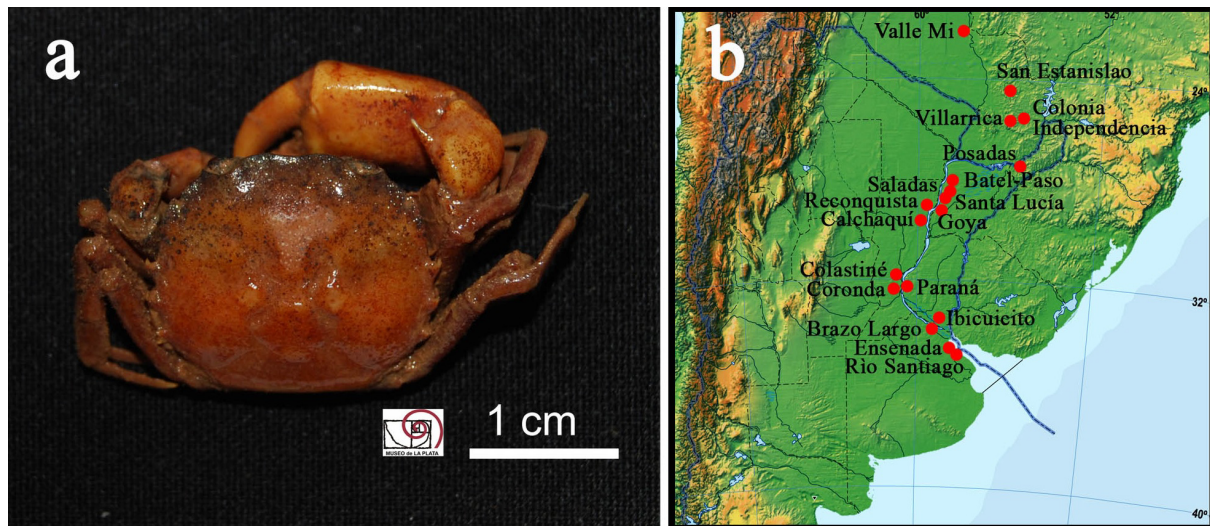
*Trichodactylus borellianus* Nobili, 1896 (Fig. 3)

MLP 11175: Argentina, Santa Fe, Reconquista, Paraná Mini—off Invernada Island; 29° 13' 60" S–59° 36' W, 21 m. a. s. l.; N. Galván coll, XII-1948. Number of specimens: 5 males, 11 ovigerous females and 1 female.

MLP 11158 and 11159: Argentina, Santa Fe, Reconquista, Paraná Mini; 29° 13' 60" S–59° 36' W, 21 m. a. s. l.; R. Ringuelet coll., 14-XII-1948. Number of specimens: 6 males, 6 females and 3 ovigerous females. R. A. Ringuelet identified.

MLP 26345: Argentina, Corrientes, Goya; 29° 07' 60" S–59° 16' 00" W, 24 m. a. s. l.; R.A. Ringuelet coll., 21-XII-1948. Number of specimens: 4 juveniles.





**Figura 3.** *Trichodactylus borellianus*. a: dorsal view; b: map of the localities according to the records from the crustacean collection of the Museo de La Plata, Argentina.

MLP 26305: Paraguay, Departamento del Guaira, Villarica; 25° 45' S–56° 25' 60" W, 24 m. a. s. l.; F. H. Schade coll., 18-XI-1947. Number of specimens: 1 female. I. I. César identified.

MLP 26285: Paraguay, Departamento del Guaira, Villarica; 25° 45' S–56° 25' 60" W, 24 m. a. s. l.; F.H. Schade coll. Number of specimens: 16 males and 1 female. I. I. César identified.

MLP 26284: Paraguay, Colonia Independencia; 25° 43' 00" S–56° 15' 00" W, 161 m. a. s. l.; F.H. Schade coll., 10-XII-1947. Number of specimens: 2 males and 1 female. I. I. César identified.

MLP 11193: Argentina, Santa Fe, Colastiné; 31° 40' 60" S–60° 37' 60" W, 8 m. a. s. l.; 03-IV-1947. Number of specimens: 1 female. R.A. Ringuet identified.

MLP 26330: Paraguay, San Estanislao; 24° 38' 60" S–56° 25' 60" W, 134 m. a. s. l.; P. Williner coll., 28-XII-1946. Number of specimens: 1 female. I. I. César identified.

MLP 26318: Paraguay, Departamento del Guaira, Villarica; 25° 45' S–56° 25' 60" W, 24 m. a. s. l.; F.H. Schade coll., 15-IV-1947. Number of specimens: 3 males. I. I. César identified.

MLP 26290: Argentina, Entre Ríos, Ibicucito Stream; 33° 49' S–58° 51' W, S. R. Castillo coll., IX-1938. Number of specimens: 7 males, 5 females (one with juveniles). R. A. Ringuet identified.

MLP 11191: Argentina, Entre Ríos, Paraná, Island off Paraná; 32° S–60° 41' W, 21 m. a. s. l.; R. Gebhard coll., 23-V-1947. Number of specimens: 1 female. R. A. Ringuet identified.

MLP 26295: Argentina, Corrientes, San Roque, Batel-Paso Cerrito River; 28° 34' S–58° 43' W, 70 m. a. s. l.; M. Birabén coll., 02-21-1932. Number of specimens: 1 female. R. A. Ringuet identified.

MLP 26292: Argentina, Buenos Aires, Ensenada; 34° 52' 33" S–57° 52' 56" W, Alba coll., XI-1943. Number of specimens: 2 males and 4 females. R. A. Ringuet identified.

MLP 26311: Argentina, Buenos Aires, Punta Lara, Ensenada; 34° 49' S–57° 58' 60" W, 4 m. a. s. l.; R. A. Ringuet coll., 01-X-1950. Number of specimens: 1 male. I. I. César identified.

MLP 26320: Paraguay, Departamento del Guaira, Villarica, Guavirá Stream; 25° 45' S–56° 25' 60" W, 125 m. a. s. l.; F. H. Schade coll., 05-VI-1947. Number of specimens: 1 female. I. I. César identified.

MLP 26312: Argentina, Buenos Aires, Ensenada, Santiago; 34° 52' 33"–S 57° 52' 56" W, 4 m. a. s. l.; R. A. Ringuet coll., 15-XII-1950. Number of specimens: 2 ovigerous females. R. A. Ringuet identified.

MLP 26319: Paraguay, Departamento del Guaira, Villarica, Tajarar; 25° 45' S–56° 25' 60" W, 125 m. a. s. l.; F.H. Schade, II-1947. Number of specimens: 3 males and 4 females. I. I. César identified.

MLP 26314: Paraguay, Departamento del Guaira, Villarrica; 25° 45' S–56° 25' 60" W, 125 m. a. s. l.; F. H. Schade coll., II-1947. Number of specimens: 5 males and 4 females. I. I. César identified.

MLP 26323: Argentina, Corrientes, Saladas; 28° 15' 00" S–58° 37' 60" W, 77 m. a. s. l.; M. Birabén coll., XII-1949. Number of specimens: 5 males and 3 females. R. A. Ringuet identified.

MLP 26294: Argentina, Santa Fe, Reconquista; 29° 13' 60" S–59° 36' W, 21 m. a. s. l.; M. Birabén coll., 29-XI-1939. Number of specimens: 1 female. R. A. Ringuet identified.

MLP 26302: Argentina, Santa Fé, Calchaquí; 29° 53' 60" S–60° 17' 04" W, 46 m. a. s. l.; M. Birabén coll., 23-XI-1939. Number of specimens: 1 female. R.A. Ringuet identified.

MLP 26299: Argentina, Buenos Aires, Brazo Largo; 34° 05' 32" S–59° 02' 06" W, S. R. Castillo coll., 05-I-1936. Number of specimens: 1 male and 3 females. R. A. Ringuet identified.

MLP 26291: Paraguay, Concepción, Puerto Valle Mi; 22° 07' 60" S 57° 58' 00" W, 121 m. a. s. l.; IV-1952. Number of specimens: 1 male and 2 females.

MLP 11310: Argentina, Corrientes, Santa Lucía River; 28° 58' 60" S–59° 06' 00" W, 35 m. a. s. l.; M. Birabén coll., XII-1949. Number of specimens: 2 males and 4 females. R. A. Ringuet identified.

MLP 26297: Argentina, Misiones, Posadas; 27° 22' 60" S–55° 52' 60" W, 53 m. a. s. l.; 04-XI-1944. Number of specimens: 1 female. R.A. Ringuet identified.

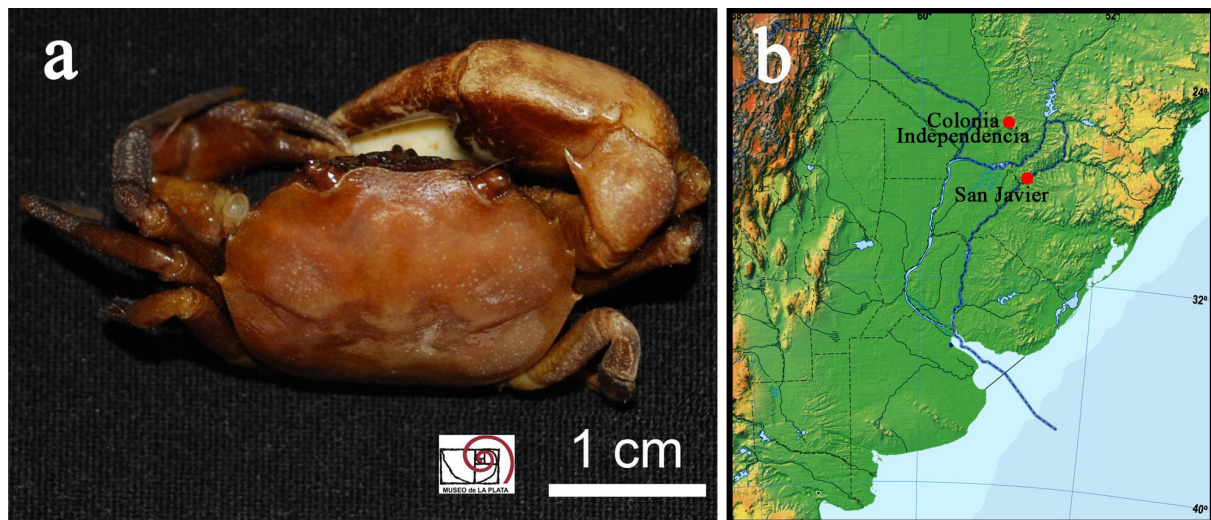
MLP 26315: Argentina, Entre Ríos, Ibicucito Stream; 33° 49' S–58° 51' W, S. R. Castillo coll., 06-II-1937. Number of specimens: 2 males and 4 females. R. A. Ringuet identified.

MLP 26303: Argentina, Santa Fe, Coronda, Maciel Stream; 31° 58' S–60° 55' W, 5 m. a. s. l.; M. Birabén coll., 21-XI-1939. Number of specimens: 5 females. R. A. Ringuet identified.

MLP 11196: Argentina, Santa Fe, Colastiné; 31° 40' 60" S–60° 37' 60" W, 14 m. a. s. l.; 1947. Number of specimens: 17 males and 15 females. R. A. Ringuet identified.

Remarks: This species is also widely distributed in Brazil, Bolivia and Paraguay (Magalhães 2003).

*Trichodactylus kensleyi* Rodríguez, 1992 (Fig. 4)



**Figura 4.** *Trichodactylus kensleyi*. a: dorsal view; b: map of the localities according to the records from the crustacean collection of the Museo de La Plata, Argentina.

MLP 26281: Paraguay, Colonia Independencia; 25° 43' 00" S–56° 15' 00" W, 161 m. a. s. l.; F.H. Schade coll. Number of specimens: 5 males and 2 females. I.I. César identified.

MLP 26280: Paraguay, Colonia Independencia; 25° 43' 00" S–56° 15' 00" W, 161 m. a. s. l.; F.H. Schade, 10-XII-1947. Number of specimens: 1 male. I. I. César identified.

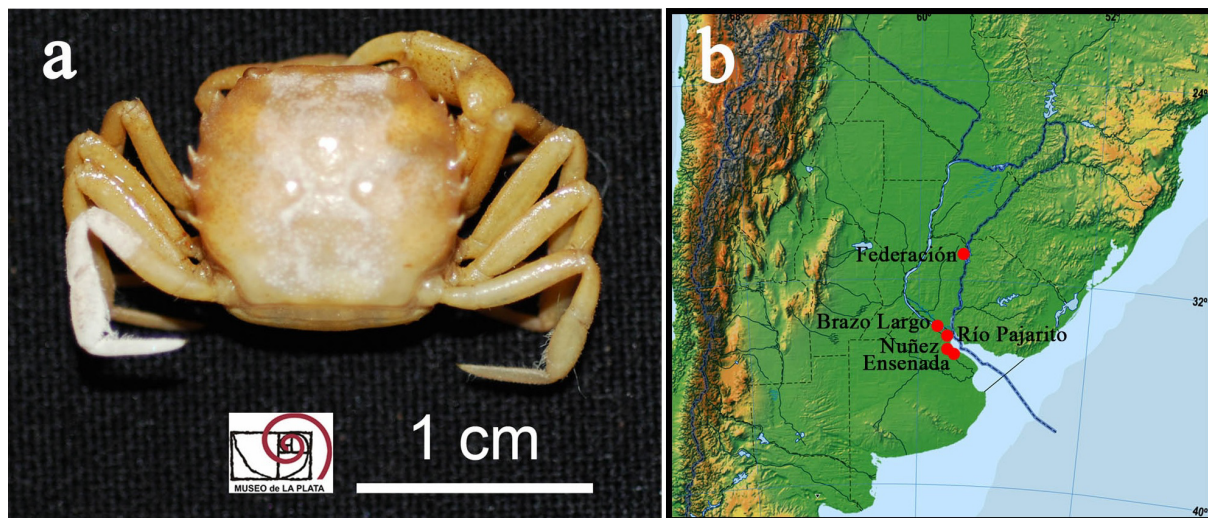


MLP 26278: Paraguay, Colonia Independencia; 25° 43' 00" S–56° 15' 00" W, 161 m. a. s. l.; F.H. Schade coll., 14-I-1948. Number of specimens: 3 males and 1 female. I. I. César identified.

MLP 26304: Argentina, Misiones, San Javier; 27° 52' 60" S–55° 07' 60" W, 75 m. a. s. l.; Braga coll., XI-1945. Number of specimens: 2 males. I. I. César identified.

Remarks: This crab has also been cited for other localities in Paraguay, Brazil (the Santa Catarina and Rio Grande do Sul states) and Uruguay and is present in the basins of the Uruguay and lower Paraná Rivers (Magalhães 2003). Furthermore, Collins (2005) found this species in streams of Misiones province which drain into the Paraná and Uruguay Rivers, at height between 200 to 600 masl.

*Trichodactylus panoplus* (Von Martens, 1869) (Fig. 5)



**Figura 5.** *Trichodactylus panoplus*. a: dorsal view; b: map of the localities according to the records from the crustacean collection of the Museo de La Plata, Argentina.

MLP 26298: Argentina, Buenos Aires, Delta del Paraná, Pajarito River; 34° 25' 33" S–58° 35' 48" W, 2 m. a. s. l.; 02-VIII-1953. Number of specimens: 2 males. R. A. Ringuelet identified.

MLP 12313: Argentina, Entre Ríos, Federación, Uruguay River; 31° 00' 00" S–57° 53' 60" W, 41 m. a. s. l.; M. Birabén coll., 03-XII-1940. Number of specimens: 3 ovigerous females. R. A. Ringuelet identified.

MLP 12316: Argentina, Buenos Aires, Ensenada, Punta Lara, Boca Cerrada Stream; 34° 49' S–57° 58' 60" W, 4 m. a. s. l.; R. A. Ringuelet coll., I-1950. Number of specimens: 2 males and 2 females. R.A. Ringuelet identified.

MLP 12314: Argentina, Buenos Aires, Núñez, Río de la Plata estuary; 34° 32' 60" S–58° 27' 00" W, 7 m. a. s. l.; S.R. Castillo coll., III-1935. Number of specimens: 1 female. R. A. Ringuelet identified.

MLP 12312: Argentina, Buenos Aires, Zárate, Brazo Largo; 34° 05' 32" S–59° 02' 06" W, 27 m. a. s. l.; S. R. Castillo, 05-I-1936. Number of specimens: 1 female. R. A. Ringuelet identified.

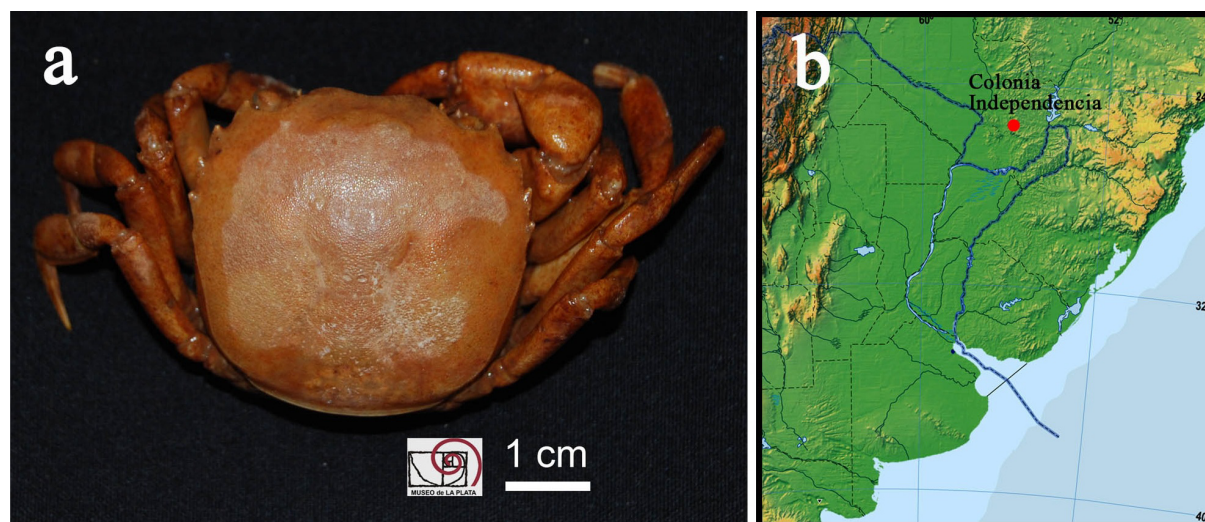
MLP 26301: Argentina, Buenos Aires, Ensenada; 34° 52' 33" S–57° 52' 56" W, 4 m. a. s. l.; A. Alba coll., XI-1943. Number of specimens: 3 males and 3 females. R. A. Ringuelet identified.

Remarks: This species is commonly found between the emergent and submerged aquatic vegetation in streams, rivers, and wetlands. Magalhães (2003) mentions the presence of *T. panoplus* in the Brazilian state of Rio Grande do Sul but doubts its distribution in the states of Santa Catarina and

São Paulo, and in Uruguay. The crab is found both in Argentina—including the basins—and in southern coastal Brazil and Uruguay plus the Uruguay River basin.

*Sylviocarcinus* H. Milne Edwards, 1853

*Sylviocarcinus australis* Magalhães & Türkay, 1996 (Fig. 6)

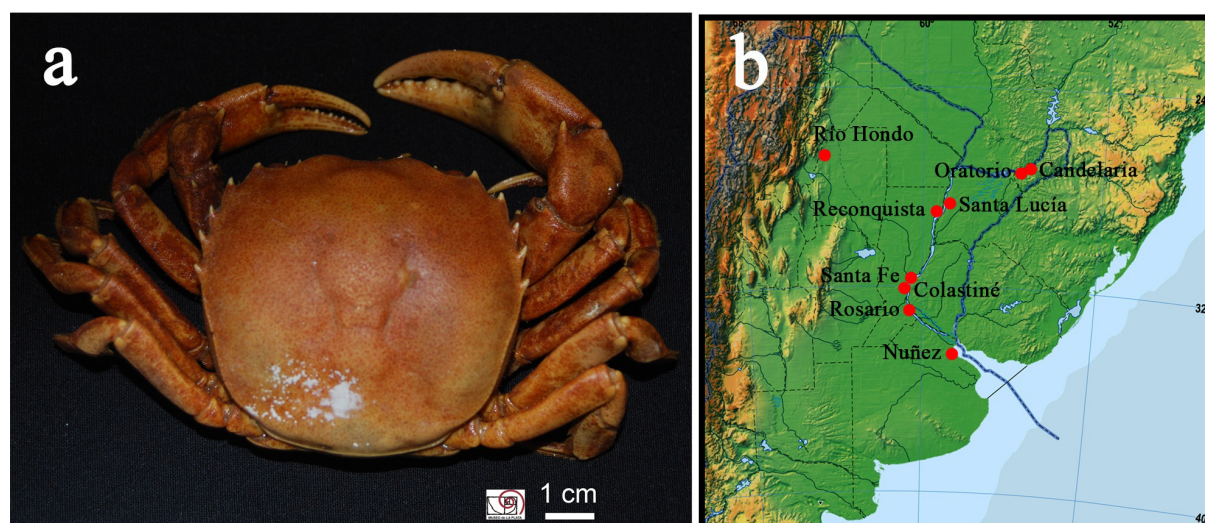


**Figura 6.** *Sylviocarcinus australis*. a: dorsal view; b: map of the localities according to the records from the crustacean collection of the Museo de La Plata, Argentina.

MLP 26179: Paraguay, Colonia Independencia, Concoia Stream; 25° 43' 00" S–56° 15' 00" W, 161 m. a. s. l.; F. H. Schade, 22-I-1948. Number of specimens: 1 male and 2 females. C. Magalhães identified.

Remarks: This species has been cited in other localities in Paraguay and recorded in the Misiones province in Argentina. Most records, however, were made from Brazil (Magalhães & Türkay 1996c). More recently this species was recorded in the Middle Paraná River (Senkman & Collins, 2008).

*Sylviocarcinus pictus* (H. Milne Edwards, 1853) (Fig. 7)



**Figura 7.** *Sylviocarcinus pictus*. a: dorsal view; b: map of the localities according to the records from the crustacean collection of the Museo de La Plata, Argentina.



MLP 12287: Argentina, Corrientes, Santa Lucía River; 28° 58' 60" S–59° 06' 00" W, 35 m. a. s. l.; M. Birabén coll., XII-1949. Number of specimens: 1 male and 3 females. R. A. Ringuelet identified.

MLP 12171: Argentina, Santa Fe, Colastiné, Colastiné River; 31° 40' 60" S–60° 37' 60" W, 8 m. a. s. l.; 1947. Number of specimens: 14 males. R.A. Ringuelet identified.

MLP 25443: Argentina, Misiones, San Ignacio, Oratorio Stream; 27° 16' 00" S–55° 31' 60" W, 130 m. a. s. l.; Fonseca, Scravaglieri & Armemi coll., II-1942. Number of specimens: 1 female.

MLP 00044: Argentina, Santa Fe, Santa Fe City; 31° 37' 60" S–60° 42' 00" W, 18 m. a. s. l.; A. Berst coll., IX-1947. Number of specimens: 5 males and 3 females. R.A. Ringuelet identified.

MLP 00039: Argentina, Santiago del Estero, Río Hondo, El Dique; 27° 34' 00" S–64° 57' 00" W, 238 m. a. s. l.; E. Domizi & J. Schnack, 19-II-1976. Number of specimens: 9 males and 10 females.

MLP 00162: Argentina, Santa Fe, Reconquista, Paraná Miní River; 29° 13' 60" S–59° 36' 00" W, 21 m. a. s. l.; R. A. Ringuelet coll., XII-1948. Number of specimens: 9 males and 10 females. R. A. Ringuelet identified.

MLP 00042: Argentina, Santa Fe, Piedras Blancas, Laguna Guadalupe Pond; 31° 38' 24" S–60° 40' 44" W, 8 m. a. s. l.; XII-1987. Number of specimens: 26 females. E. C. Lopretto identified.

MLP 12286: Argentina, Santa Fe, Colastiné; 31° 40' 60" S–60° 37' 60" W, 8 m. a. s. l.; 1947. Number of specimens: 6 males and 12 females. R. A. Ringuelet identified.

MLP: 26554: Argentina, Buenos Aires, Núñez, Río de la Plata River; 34° 32' 60" S–58° 27' 00" W, 7 m. a. s. l.; S. R. Castillo, 01-II-1937. Number of specimens: 2 males and 1 female. R. A. Ringuelet identified.

MLP 25805: Argentina, Misiones, Candelaria, upper Paraná River; 27° 28' 00" S–55° 43' 60" W, 98 m. a. s. l.; E. Parodiz, XII-1943. Number of specimens: 13 males, 9 females and 18 ovigerous females.

MLP 00034: Argentina, Santa Fe, Piedras Blancas, Guadalupe Pond; 31° 38' 24" S–60° 40' 44" W, 8 m. a. s. l.; 1-4-XII-1987. Number of specimens: 24 females.

MLP 12283: Argentina, Santa Fe, Santa Fe City; 31° 37' 60" S–60° 42' 00" W, 18 m. a. s. l.; A. Berst coll., R. A. Ringuelet identified. Number of specimens: 12 males and 4 females.

MLP 00041: Argentina, Santa Fe, Piedras Blancas, Guadalupe Pond; 31° 38' 24" S–60° 40' 44" W, 8 m. a. s. l.; 01-XI-1987. Number of specimens: 9 females. E. C. Lopretto identified.

MLP 11368: Argentina, Santa Fe, Rosario, Paraná River; 32° 57' 04" S–60° 39' 59" W, 10 m. a. s. l.; V. Mastrarrigo coll. Number of specimens: 12 males and 8 females. R.A. Ringuelet identified.

Remarks: This crab is widely distributed in the Orinoco, Amazon, and La Plata basins and is recorded in several locations in Guyana and French Guyana. Most records have been from Brazil, but also from Peru and Bolivia (Magalhães & Türkay 1996c).

### *Zilchiopsis* Bott, 1969

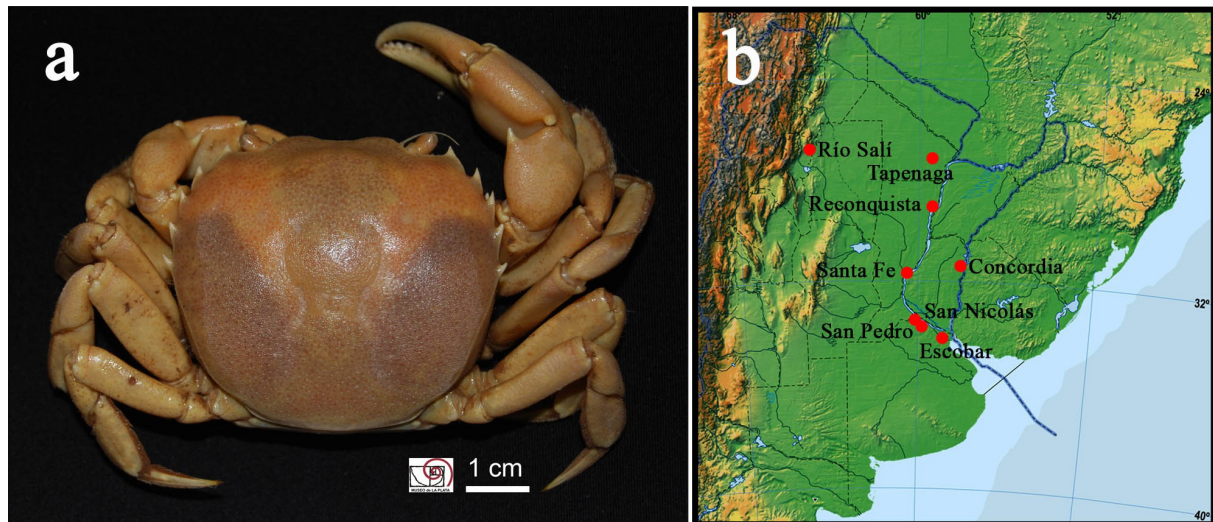
#### *Zilchiopsis collastinensis* (Pretzmann, 1968) (Fig. 8)

MLP 12276: Argentina, Tucumán, Salí River; 26° 51' S–65° 10' W, 430 m. a. s. l.; A. C. Umana coll., 01-III-1944. Number of specimens: 1 male and 4 females. C. Magalhães identified.

MLP 12280: Argentina, Chaco, Tapenaga Stream; 27° 33' S–59° 40' W, 28-XI-1934. Number of specimens: 1 male. C. Magalhães identified.

MLP 12303: Argentina, Buenos Aires, San Nicolás; 33° 19' 49" S–60° 13' 37" W, 17 m. a. s. l.; S. Riva, IX-1949. Number of specimens: 9 males and 7 females. C. Magalhães identified.

MLP 12170: Argentina, Buenos Aires, Escobar, Paraná de Las Palmas; 34° 20' 48" S–58° 49' 07" W, 19 m. a. s. l.; S. R. Castillo, 06-XII-1936. Number of specimens: 1 male. C. Magalhães identified.



**Figura 8.** *Zilchiopsis collastinensis*. **a:** dorsal view; **b:** map of the localities according to the records from the crustacean collection of the Museo de La Plata, Argentina.

MLP 00114: Argentina, Entre Ríos, Concordia; 31° 23' 60" S–58° 01' 60" W, 21 m. a. s. l.; Mc Donagh coll., 1943. Number of specimens: 1 male. C. Magalhães identified.

MLP 12284: Argentina, Santa Fe, Reconquista, Paraná Mini River—in front of La Invernada Island; 29° 13' 60" S–59° 36' W, 21 m. a. s. l.; R. A. Ringuelet coll., XII-1948. Number of specimens: 1 female and a tube with many juvenile. C. Magalhães identified.

MLP 12177: Argentina, Buenos Aires, San Pedro; 33° 40' 14" S–59° 40' 58" W, 31 m. a. s. l.; Mc Donagh coll., 29-I-1946. Number of specimens: 2 males. C. Magalhães identified.

MLP 12305: Argentina, Santa Fe, Laguna Guadalupe Pond; 28° 55' 60" S–59° 34' 00" W, 8 m. a. s. l.; 14-IV-1947. Number of specimens: 2 males. C. Magalhães identified.

MLP 00118: Argentina, Santa Fe, Guadalupe Pond, and Alto Verde; 31° 40' S–60° 40' 60" W, 8 m. a. s. l.; A. Berst coll., 05-VI-1940 and 17-III-1942. Number of specimens: 6 males and 1 female. C. Magalhães identified.

MLP 12306: Argentina, Tucumán, Salí River; 26° 51' S–65° 10' W, 430 m. a. s. l.; A. C. Umana coll., III-1944. Number of specimens: 2 males and 2 females. C. Magalhães identified.

Remarks: This crab is widespread in Argentina and, in addition to the localities cited in this catalogue, is registered in the provinces of Formosa, Santiago del Estero, Corrientes, and several localities in Buenos Aires (Magalhães & Türkay 1996c).

## Discussion

The purpose of preserving and enhancing zoological collections is concerned mainly with generating registers of the biodiversity of native wildlife. This cataloguing, in turn, allows the acquisition of information on the diversity, distribution, and ecology of the various species thus registered. All this information is highly relevant both in terms of general knowledge and for furthering studies on environmental impact, conservation, and the distribution of zoonoses affecting humans as well as wild and domestic animals. In addition, the maintenance of a representative collection over time provides information on the variations in the diversity and distribution of organisms.

The Crustacean Collection of the La Plata Museum consists of specimens of the species *Dilocarcinus pagei*, *Poppiana argentiniana*, *Trichodactylus borellianus*, *Trichodactylus kensleyi*, *Trichodactylus panoplus*, *Sylviocarcinus pictus*, *Sylviocarcinus australis*, and *Zilchiopsis collastinensis*.

With regard to *Sylviocarcinus pictus*, the lots identifications were made by Raul Ringuelet in the middle of the twentieth century and, therefore, before the revision of Magalhães & Türkay (1996b). Until then, the species was further south of the continent was also seen as *S. pictus*. Magalhães & Türkay (1996) described a new species, *Sylviocarcinus australis* which has a distribution southern than *S. pictus* and most likely the taxon happens in Argentina. It is likely that the specimens identified as *S. pictus* by Ringuelet correspond to *S. australis* because they are closely related species and the identity of these individuals may be subject to change for review.

The distribution of these species in Argentina extends mainly from Santa Fe, Chaco, Tucumán, Formosa, Santiago del Estero to the so-called Mesopotamian Provinces (*i. e.*, Entre Ríos, Corrientes, and Misiones). Along with these native exemplars, specimens from Paraguay are also deposited in the collection.

### Acknowledgments

Dr. Donald F. Haggerty, a retired career investigator and native English speaker, edited the final version of the manuscript.

The authors thank Drs. P. Collins and C. Magalhães by critical review of the manuscript.

### References

- Bott, R. 1969. Die Süßwasserkrabben Süd-Amerikas und ihre Stammesgeschichte. Eine Revision der Trichodactylidae und der Pseudothelphusidae östlich der Anden (Crustacea, Decapoda). *Abhandlungen der Senckenbergischen Naturforschenden Gesellschaft* 518: 1-94, 24 pls.
- César, I.I. & C. Damborenea. 2010. Type and non-type specimens of *Aegla* (Decapoda: Anomura: Aegliidae) housed in the Museo de La Plata, Argentina. *Zootaxa*, 2337: 31–46.
- Collins, P.A., V. Williner & F. Giri. 2002. A new distribution record for *Zilchiopsis oronensis* (Pretzmann, 1968) (Decapoda, Trichodactylidae) in Argentina. *Crustaceana* 75: 931-934.
- Collins, P. A., 2005. Distribución altitudinal del cangrejo *Trichodactylus kensleyi* (Rodríguez, 1992) en Misiones, Argentina. *Natura Neotropicalis*, 36: 85-87.
- Collins, P., F. Giri & V. Williner. 2006. Population dynamics of *Trichodactylus borellianus* (Crustacea Decapoda Brachyura) and interactions with the aquatic vegetation of the Paraná River (South America, Argentina). *Annales de Limnologie - International Journal of Limnology* 42 (1): 19-25. doi: 10.1051/limn/2006001
- Collins, P., F. Giri & V. Williner. 2009. Range extension for three species of South American freshwater crabs (Crustacea: Decapoda: Trichodactylidae). *Zootaxa* 1977: 49-54.
- Collins, P.A., F. Giri & V. Williner. 2011. Biogeography of the freshwater decapods in the La Plata Basin, South America. *Journal of Crustacean Biology* 31(1): 179-191. doi: 10.1651/10-3306.1
- Cumberlidge, N.; Álvarez, F. & J.L.Villalobos. 2014. Results of the global conservation assessment of the freshwater crabs (Brachyura, Pseudothelphusidae and Trichodactylidae): The Neotropical region, with an update on diversity. *Zookeys* 457: 133–157. doi: 10.3897/zookeys.457.6598
- Magalhães, C. 1999a. Familia Trichodactylidae (caranguejos braquiúros da água doce); pp. 486-490, in L. Buckup & G. Bond-Buckup (eds.). *Os crustáceos do Rio Grande do Sul*. Universidade / UFRGS, Porto Alegre.
- Magalhães, C. 1999b. Crustáceos decápodos; pp. 127-133, in D. Ismael, W.C. Valenti, T. Matsumura-Tundisi and O. Rocha (eds.). *Invertebrados de Água Doce Vol. 4, Biodiversidade do estado de São Paulo: Síntese do Conhecimento ao Final do Século XX*. FAPESP, São Paulo.

- Magalhães, C. 2003. Familias Pseudothelphusidae e Trichodactylidae; pp. 143-287, in G.A.S. Melo (ed.). *Manual de identificação dos Crustácea Decapoda de água doce do Brasil*. Editora Loyola, São Paulo.
- Magalhães, C. & M. Türkay. 1996a. Taxonomy of the neotropical freshwater crab family Trichodactylidae I. The generic system with description of some new genera. *Senckenbergiana biologica* 75: 63-95.
- Magalhães, C. & M. Türkay. 1996b. Taxonomy of the neotropical freshwater crab family Trichodactylidae II. The genera *Forsteria*, *Melocarcinus*, *Sylviocarcinus*, and *Zilchiopsis* (Crustacea: Decapoda: Brachyura). *Senckenbergiana biológica* 75: 97-130.
- Magalhães, C. & M. Türkay. 1996c. Taxonomy of the neotropical freshwater crab family Trichodactylidae III. The genera *Fredilocarcinus* and *Goyazana* (Crustacea: Decapoda: Brachyura). *Senckenbergiana biologica*, 75: 131-142.
- Magalhães, C. & M. Türkay. 2008. Taxonomy of the neotropical freshwater crab family Trichodactylidae IV. The genera *Dilocarcinus* and *Poppiana* (Crustacea: Decapoda: Trichodactylidae). *Senckenbergiana biologica* 88: 185-215.
- Morrone, J.J. & E.C. Lopretto. 1996. Cladistics of the Family Trichodactylidae (Crustacea: Decapoda): A reappraisal. *Journal of Comparative Biology* 1: 65-72.
- Morrone, J.J. & E.C. Lopretto. 2001. Trichodactylid biogeographic patterns (Crustacea: Decapoda) and the Neotropical region. *Neotropica* 47: 49-55.
- Nobili, G. 1896a. Viaggio del Dott. A. Borelli nella Repubblica Argentina e nel Paraguay. XIX. Crostacei Decapodi. *Bollettino dei Musei di Zoologia e Anatomia comparata*, Torino 11(222): 1-4.
- Nobili, G. 1896b. Viaggio del Dott. Alfredo Borelli nel Chaco Boliviano e nella Repubblica Argentina. I. Crostacei Decapodi. *Bollettino dei Musei di Zoologia e Anatomia comparata*, Torino 11(265): 1-3.
- Nobili, G. 1898. Supra alcuni Decapodi terrestri e d'acqua dolce dell' America meridionale. *Annali di Museo Civico di Storia Naturale di Genova* 2(19): 9-14.
- Ortmann, A.E. 1902. The geographical distribution of freshwater Decapods and its bearing upon ancient geography. *Proceedings of the American Philosophical Society* 41: 267-400.
- Rathbun, M.J. 1904. Les crabes d'eau douce (Potamonidae). *Nouvelles Archives du Muséum d'Histoire Naturelle Paris*. 6 (4), 225-312.
- Rathbun, M.J. 1905. Les crabes d'eau douce (Potamonidae). *Nouvelles Archives du Muséum d'Histoire Naturelle Paris*, 7 (4): 159-321, pls. 11-22, Paris.
- Rathbun, M.J. 1906. Les crabes d'eau douce (Potamonidae). *Nouvelles Archives du Muséum d'Histoire Naturelle Paris*, 8 (4): 33-122; Paris.
- Ringuelet, R.A. 1949. Camarones y cangrejos de la zona de Goya (Sergestidae, Palaemonidae y Trichodactylinae). *Notas del Museo de La Plata, Zoología*, 14(119): 79-109.
- Rodríguez, G. 1992. *The Freshwater Crabs of America. Family Trichodactylidae and Supplement to the Family Pseudothelphusidae*. Editions ORSTOM, Paris. 189 pp. (Collection Faune Tropicale 31).
- Senkman, E. & P.A. Collins. 2008. Diversidad de Decápodos Brachyuros en el tramo medio del Río Paraná. 73<sup>o</sup> *Reunion de Comunicaciones Científicas. Asociación de Ciencias Naturales del Litoral. INALI (CONICET U.N.L.)* pag. 16.
- Torres, M.V., P.A. Collins & F. Giri. 2014. Morphological variation of freshwater crabs *Zilchiopsis collastinensis* and *Trichodactylus borellianus* (Decapoda, Trichodactylidae) among localities from the middle Paraná River basin during different hydrological periods. *ZooKeys* 457: 171–186. doi: 10.3897/zookeys.457.6726



- Williner, V. & P.A. Collins. 2013. Feeding ecology of the freshwater crab *Trichodactylus borellianus* (Decapoda: Trichodactylidae) in the floodplain of the Paraná River, southern South America. *Latin American Journal of Aquatic Research* 41(4): 781-792. doi: 103856/vol41-issue4-fulltext-15
- Williner, V., F. Giri & P.A. Collins. 2003. *Crustáceos superiores del Museo Provincial de Ciencias Naturales "Florentino Ameghino"*. Serie Catálogo Museo Provincial de Ciencias Naturales "Florentino Ameghino"; Santa Fe: 1-36.
- Williner, V., D. Azevedo Carvalho & P.A. Collins. 2014. Feeding spectra and activity of the freshwater crab *Trichodactylus kensleyi* (Decapoda: Brachyura: Trichodactylidae) at La Plata basin. *Zoological Studies* 53: 71. doi: 10.1186/s40555-014-0071-x

**Recibido: noviembre 2015**

**Aceptado: marzo 2016**